

# Release Notes - MIKE OPERATIONS 2025.0

## Release date

November 2024

## Welcome

Welcome to MIKE OPERATIONS 2025.0

In this Release Note, you will find information about new features of MIKE OPERATIONS and what you need to know to install and get started with Release 2025.

MIKE OPERATIONS is a software product designed for data management and model-based forecast services for online operational control of river systems, water collection systems and water distribution systems. MIKE OPERATIONS empowers you to build real-time systems by offering flexible tools that help you deal with complexities such as acquiring and combining online data sources in preparation for real-time modelling.

MIKE OPERATIONS is a product consolidation of software tools developed and applied in projects since 2010. Hence, although MIKE OPERATIONS is a relatively new member of the MIKE product family it builds on proven software products that already serve many customers worldwide.

### Note

Note the model adapters of MIKE OPERATIONS support the official MIKE 2025 release only. This means that previous and future releases of MIKE engines are NOT supported.

## System requirements

### Operating systems

Fully supported Windows operating systems (\*)

- Windows 11 Pro, version 24H2 (64 bit)
- Windows 11 Pro, version 23H2 (64 bit)

<b>Operating systems</b>	<ul style="list-style-type: none"> <li>• Windows 10 Pro, version 22H2 (64 bit)</li> <li>• Windows Server 2022, version 21H2</li> </ul>
Non-supported but partially tested operating systems (**)	<ul style="list-style-type: none"> <li>• Windows Server 2019 Standard, version 1809</li> </ul>

(\*) Fully supported operating systems are systems that have been tested in accordance with MIKE's Quality Assurance procedures and where warranty and software maintenance agreement conditions apply.

(\*\*) Non-supported but partially tested operating systems are systems, which are not officially supported by the MIKE software products. These operating systems have only undergone very limited testing for the purpose of MIKE software, but the software and key features are likely to work. Installation of MIKE software on a non-supported operating system is done so at the user's own risk. The MIKE software warranty and software maintenance agreement conditions do not apply for unsupported operating systems and DHI is under no obligation to provide assistance or troubleshooting for cases where the software is being used on a non-supported operating system.

Please note that when running a fully supported operating system as a 'guest operating system' on a virtualization platform, it is automatically downgraded to a non-supported operating system under the conditions provided above.

<b>Minimum hardware/software requirements</b>	
<b>Processor</b>	Compatible with x64 instruction set, 2.2 GHz or higher
<b>Memory (RAM)</b>	16 GB or higher *
<b>Storage</b>	64 GB or higher *
<b>Display</b>	Resolution 1024 x 720 (High-Definition) or higher, 24-bit color (true color)
<b>Graphics adapter</b>	64 MB RAM (256 MB RAM or higher recommended), 32-bit true color
<b>Software requirements</b>	Microsoft .NET Framework 4.7.2 or higher



(\*) The actual required amount of memory and disk space depend on the usage (application, model setup, size of data files etc.)

## PostgreSQL

With this release, the following combinations of PostgreSQL and PostGIS are supported.

PostgreSQL	PostGIS
PostgreSQL 13	PostGIS 3.1.*
PostgreSQL 13	PostGIS 3.2.*
PostgreSQL 14	PostGIS 3.1.*
PostgreSQL 14	PostGIS 3.2.*
PostgreSQL 14	PostGIS 3.3.*
PostgreSQL 15	PostGIS 3.3.*
PostgreSQL 15	PostGIS 3.4.*
PostgreSQL 16	PostGIS 3.4.*
PostgreSQL 17	PostGIS 3.5.*

Read more about database version support on [DHI Developers](#)

## Installation

To install MIKE OPERATIONS, please go to the **MIKE OPERATIONS** product folder and execute the `setup.exe` file from the downloaded, un-zipped installation files. Before you press the 'Install' button, we recommend that you read the note describing how to install MIKE OPERATIONS - this is available [here](#).

## License file and dongle

To use MIKE OPERATIONS in licensed mode, please refer to the DHI License Manager Release Notes.

## Product invocation

Launch MIKE OPERATIONS from the Windows Start menu.

## Support

For general support, please refer to our FAQ or the [MIKE OPERATIONS Online Help](#).

If you experience any difficulties, or if you have questions, please contact our [Customer Care team](#) at [mike@dhigroup.com](mailto:mike@dhigroup.com).

You can also contact your local Customer Care team for support in your local language. A list can be found [here](#).

## Breaking Changes

Breaking changes are changes made to functionality that requires user action as part of an upgrade to ensure that specific functionality will work after the upgrade.

If any breaking changes has been made to a release, the breaking changes will be described in the release notes.

## MIKE1D and MIKE+ adapter models

As a result of fixing issues with identifying and reading output time series on links, models registered with the MIKE1D or the MIKE+ adapters, should be reregistered in order to parse links correctly.

In case links output is not used, there is no need for doing a re-registration of the models.

## New features

Every new release of MIKE OPERATIONS consists of new modules, new features and/or corrections to problems or significant inconsistencies discovered in previous releases.

Please find below, a brief description of the most significant news.

The MIKE OPERATIONS 2025 release is a public release based on version 2025 Update MIKE Zero, MIKE+ and FEFLOW (8.2).

The feature list of MIKE OPERATIONS 2025 includes features included in the release of MIKE OPERATIONS 2024, and features added since this release.

<b>Module</b>	<b>Description</b>
Time series Folder Provider	DFS0 folder time series can be registered when configured in Time Series Manager
Scripting	Extending entity Scripting to ease Python scripting in MIKE Workbench
MODFLOW Adapter	New MODFLOW Adapter for MIKE Mine
MIKE+ Adpater	Enhacement to MIKE+ adapter feature allowing configuration of new scenario from MIKE HYDRO River and MIKE 11 template
MIKE+ Adpater	Enhacement to MIKE+ adapter feature highlighting the model scenario it belongs to if the names are identical
MIKE12 Structures Results for Links	Linking model with link
Security Upgrades	Password Encryption has been upgraded to use Aes/AesCryptoServiceProvider encryption
Documentation	Updated documentation for tools and tool sequence
Find Data- new Ribbon	Results in searching for providers in MIKE OPERATIONS
Find Data- new Ribbon	Additonal enhacements highlighting search options for the providers like- feature associations, workflow, report defination, Find Data for Job instance on Source details
Trobleshooting Wizard	Logging the license logs for Job Service
Time series Import Wizard	Provides a import wizard to import time series data from multiple files from disk

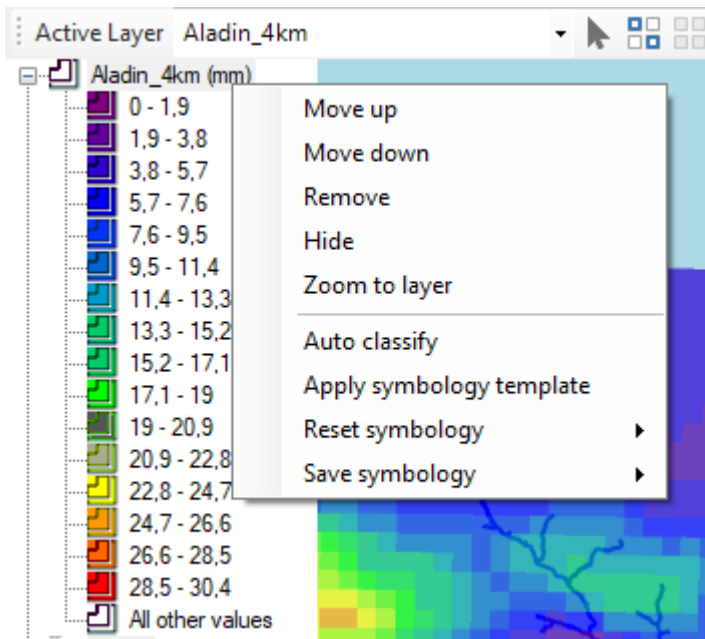
Module	Description
Map layer Symbology template for raster	Allows to apply a symbology template to map styles, from a list of predefined symbology templates

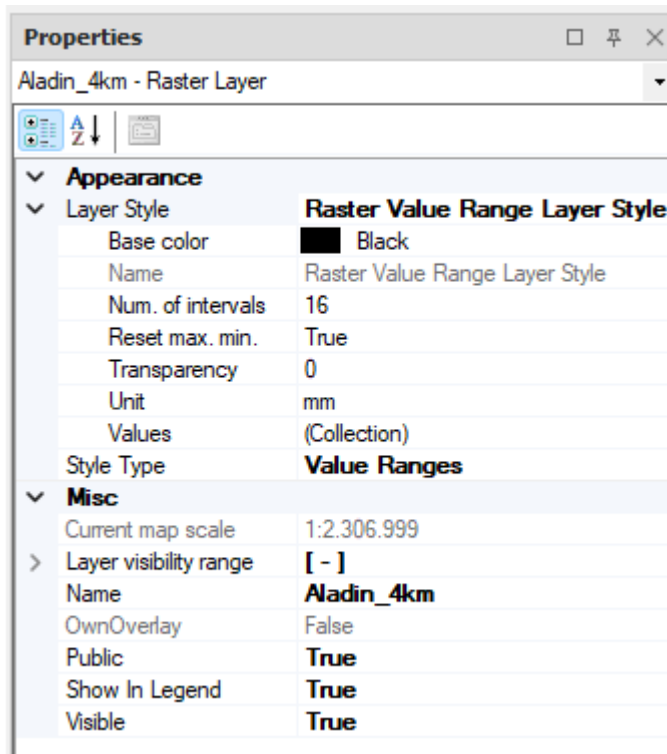
## GIS Manager

### Map layer Symbology template for raster

A new feature is added where one can choose to apply a symbology template to a map Layer Style for Style type 'Value ranges'.

The default template applied to raster layer is the MIKE Zero 16 color rainbow template but one can choose to apply an alternative symbology template from the context menu of the layer by right clicking.





For detailed explanation on working with map and applying asymbology template refer to the [user documentation](#)

## Time Series

### Folder Provider (DFS0)

User can access the time series stored on disk as dfs0 files through Folder Provider option in Time Series Explorer. When a Time series Folder provider connection is configured, it is possible to register .dfs0 time series from the context menu of the Time Series Explorer root node as shown below.

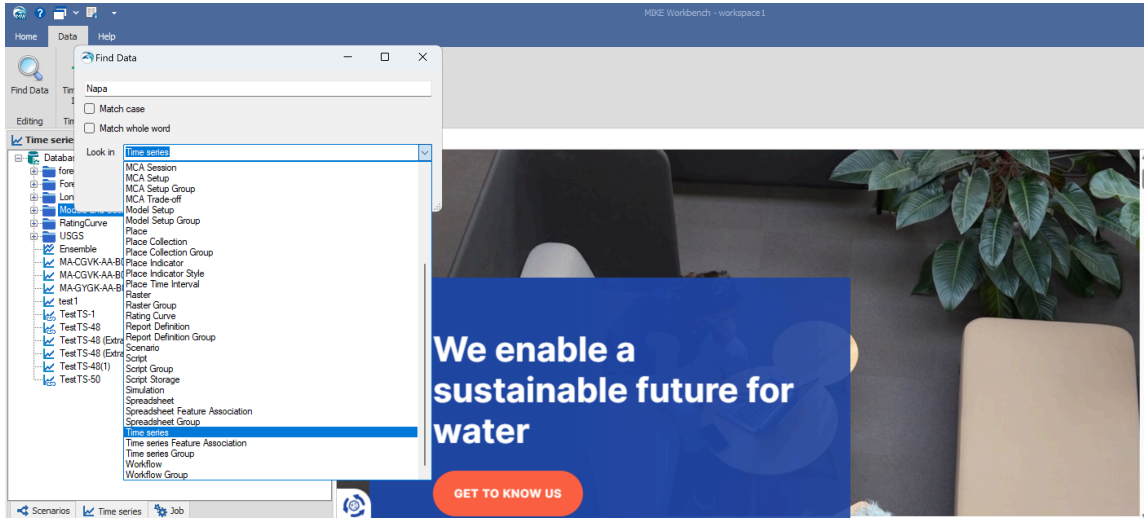
For detailed explanation on configuring Folder Provider connection, refer to the [user documentation](#)

## Core

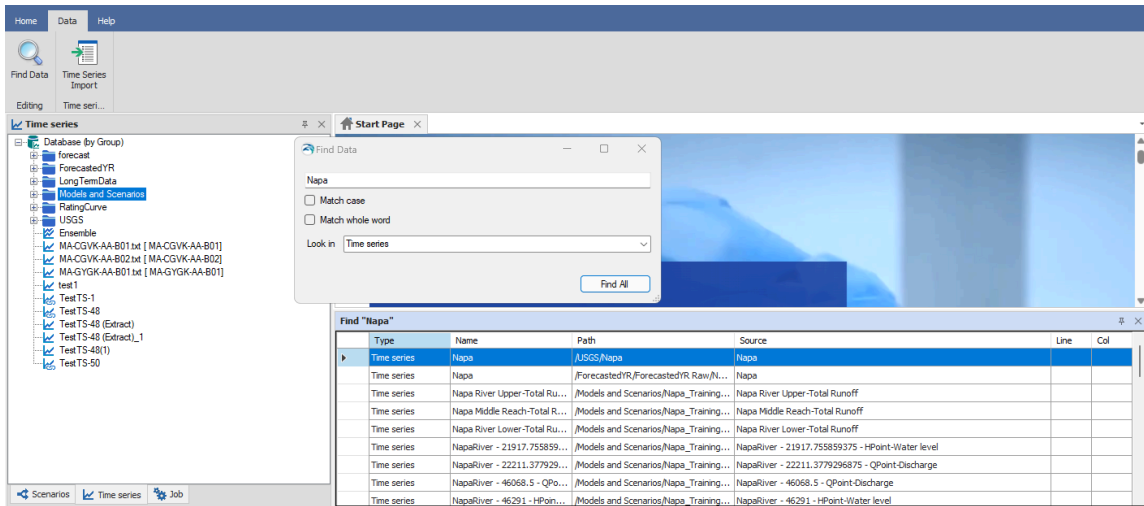
### Find Data

New Ribbon item for finding entities in providers is implemented.

The user can enter a string or a text, select the data provider to search, as shown below.



Once the search completes, the results corresponding to the search will be listed. Double clicking a result will take to the exact path in the explorer of the data provider.



## Time Series

### Time Series Import Wizard

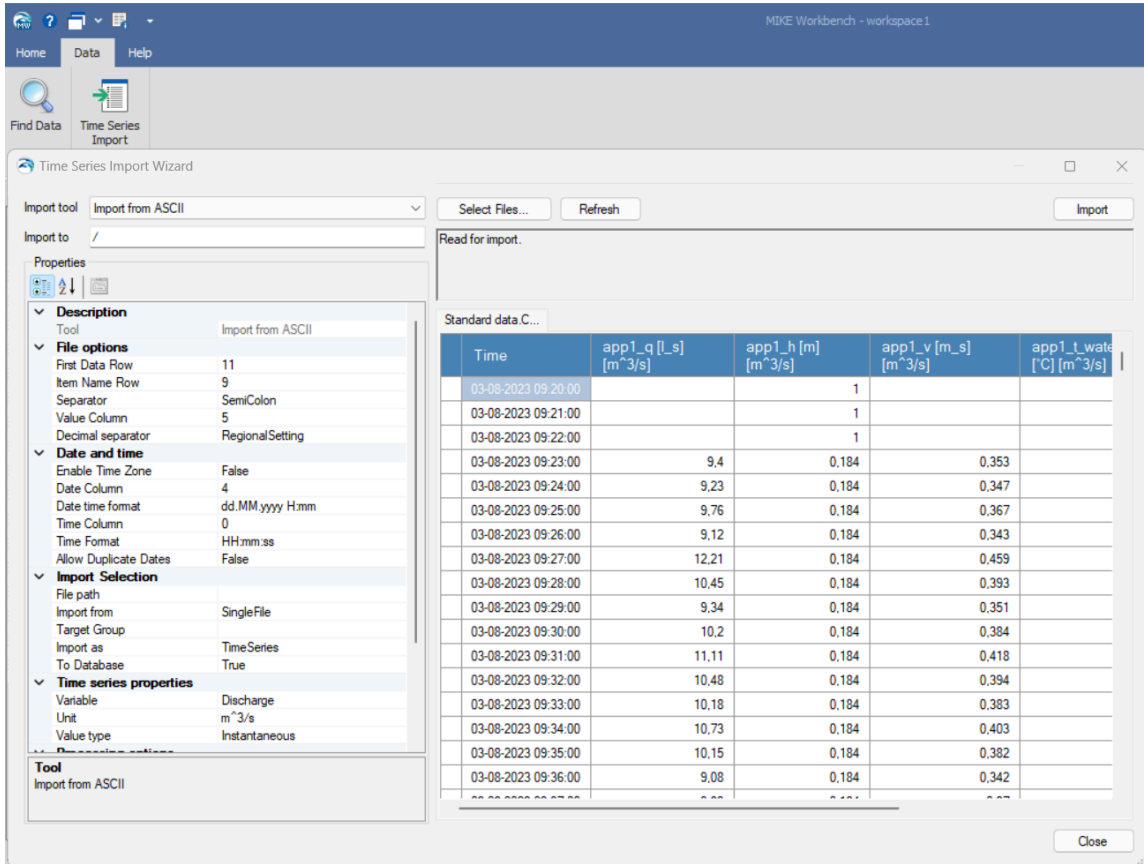
Time Series Import Wizard allows importing time series files from disk into the database using Time Series Import tools.

The **Time Series Import Wizard** is located in the **Data** ribbon page as shown below.

Selecting *Time Series Import* from the Data section will show the Wizard.

In connection with making the new wizard, tool properties grouping has been updated for easing the use of the import tools.



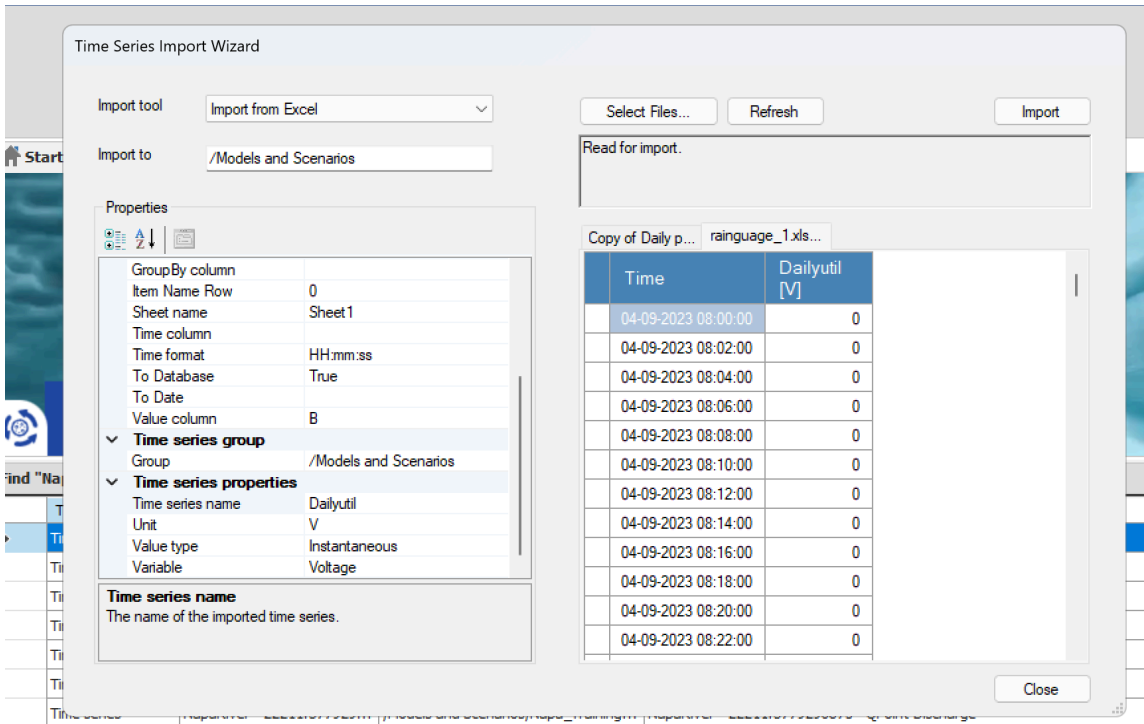


To load the files, click on the **Select Files** button and chose the file or files that needs importing.

For every file selected, a new tab will be shown and more than one file, tabs for respective file will be shown as shown below.

The **Refresh** button will parse the files using the property values specified in **Properties** and show the results as parsed according to the properties specified.

Clicking on the **Import** button will import the data into the path specified in the **Import to** field.



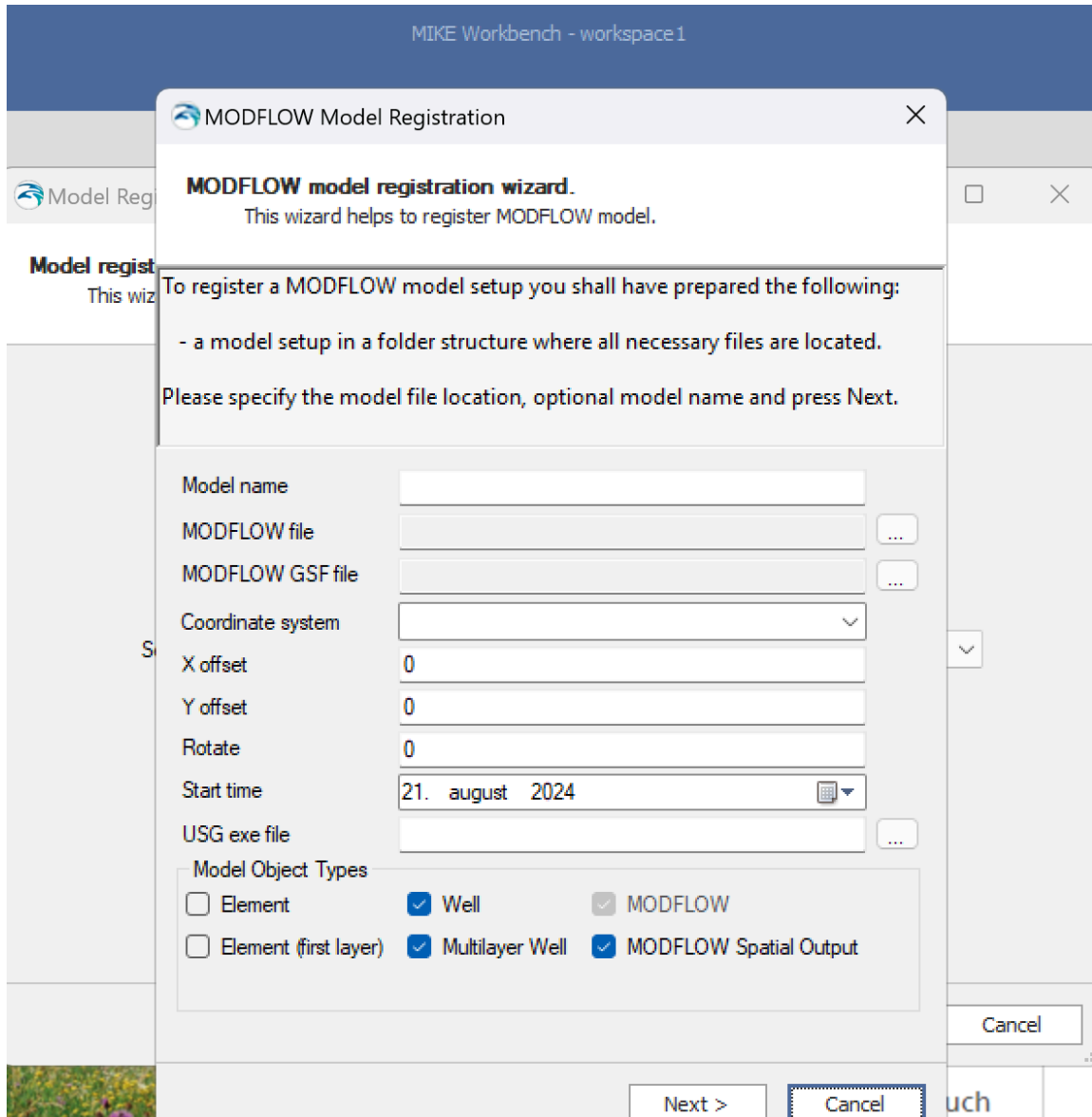
For detailed explanation on TimeSeries Import Wizard, refer to the [user documentation](#).

## Model Adapter

### New MODFLOW Adapter

A new model adapter was introduced with MIKE OPERATIONS 2024.3 that allows working with the MODFLOW modular hydrologic model.

When registering a model using the Scenario Manager, a new entry for the MODFLOW adapter named **MODFLOW USG** will appear. Selecting this option will provide the user interface to register.



For a detailed explanation on MODFLOW adapter registration, refer to the [user documentation](#).

### Fixed issues (2025)

Module/type	Error/Inconvenience fixed
TIM - TimeSeries Manager	TimeSeries Import Wizard, index error
TIM - TimeSeries Manager	TimeSeries Import Wizard, timezone time conversion

<b>Module/type</b>	<b>Error/Inconvenience fixed</b>
TIM - TimeSeries Manager	TimeSeries Import Wizard, importing date in incorrect format
TIM - TimeSeries Manager	TimeSeries Import Wizard, loading huge file size
TIM - TimeSeries Manager	TimeSeries Import Wizard, incorrect unit in the review panel
TIM - TimeSeries Manager	TimeSeries Import Wizard, duplication of the icon when setting layout to default
TIM - TimeSeries Manager	TimeSeries Import tool, import shows successful but timeseries did not import when logged is as reviewer
TIM - TimeSeries Manager	Editing long time series causing slowness
Tools - TimeSeries	TimeseriesCalculatorTool showing None values in the output
SCM - Scenario Manager	MIKE11 Adapter-Invalid Q/h-relations written to the bnd11 file
SCM - Scenario Manager	Shell crushing when template set to default while running big models
SCM - Scenario Manager	Saving an MCA sheet throws an error
SCM - Scenario Manager	Unable to register one MIKE HYDRO basin model
SCM - Scenario Manager	MIKE+ unable to run simulation
SCM - Scenario Manager	MIKE+ unable to use template scenario for model setup as output time series name already exist

<b>Module/type</b>	<b>Error/Inconvenience fixed</b>
SCM - Scenario Manager	Registering MIKE SHE model failed
SCM - Scenario Manager	Running Feflow own module throws Object reference error
SCM - Scenario Manager	Shell crashing when running a big modue in background and setting the layout to default
GIS - GIS Manager	Creating a new or editing a feature class, shell crashes/exits while saving without any logs
DOC - Document Manager	Large files failed to download from MO Export tool
JOB - Job Manager	Unable to find the job instance that was run using Find Data when the language setting is regional
SPR - Spreadsheet Manager	Uploading a large PNG file downloaded over internet failed with out of memory error
ANM - Analysis Manager	saving an MCA sheet threw a property name error
COR - Core	Correcting the FAQs redirection
COR - Core	Trouble shooting wizard shows DB version being incorrect